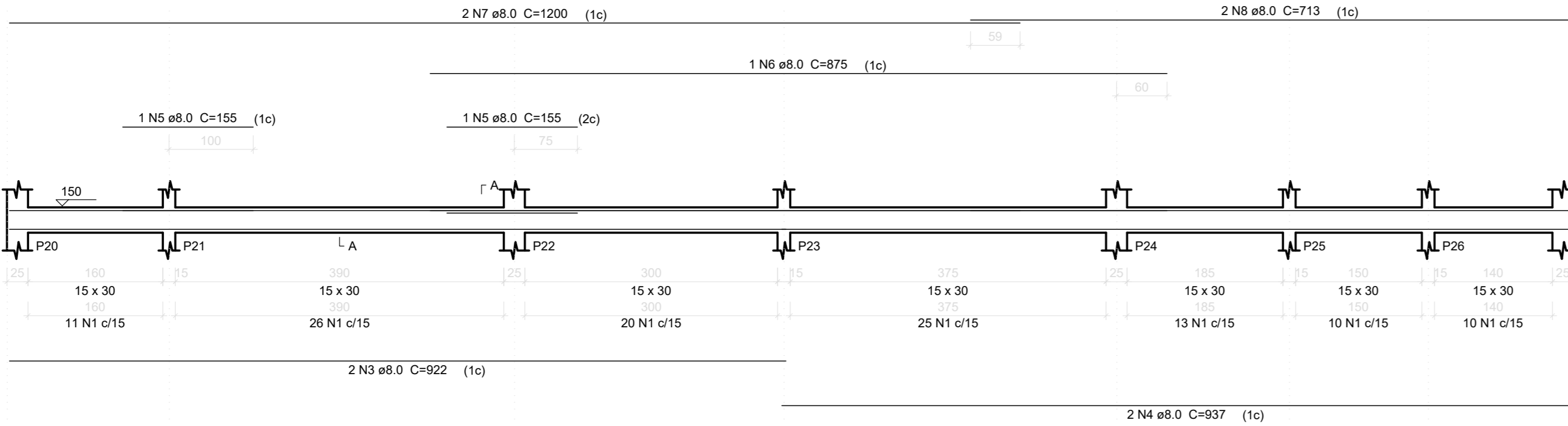
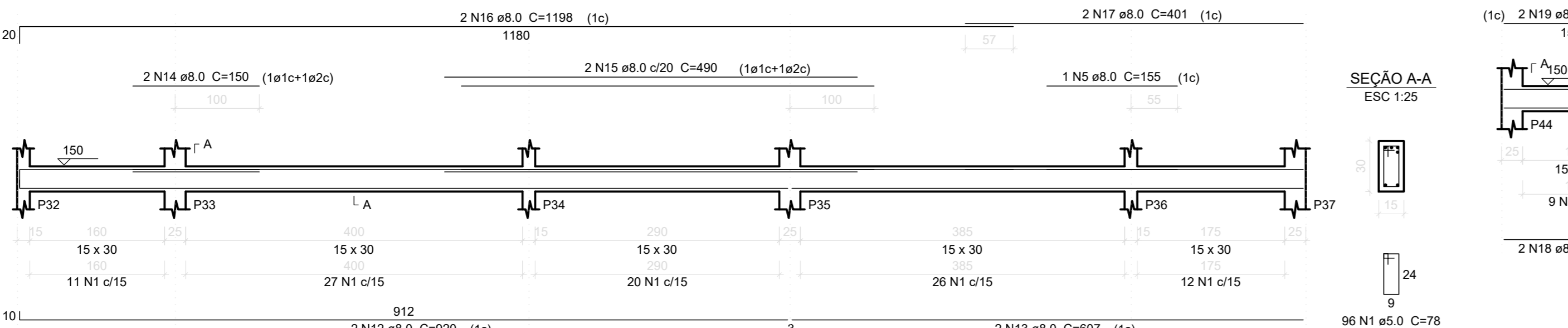


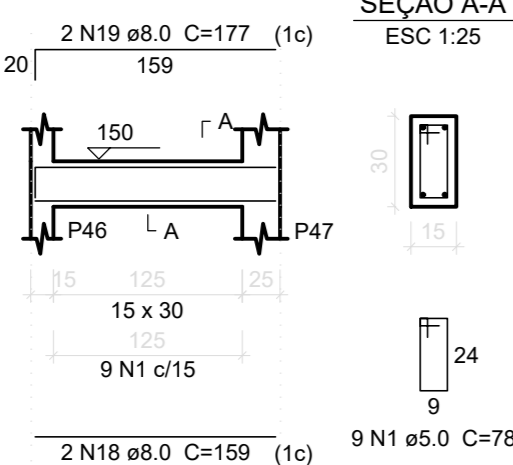
VB7  
ESC 1:50



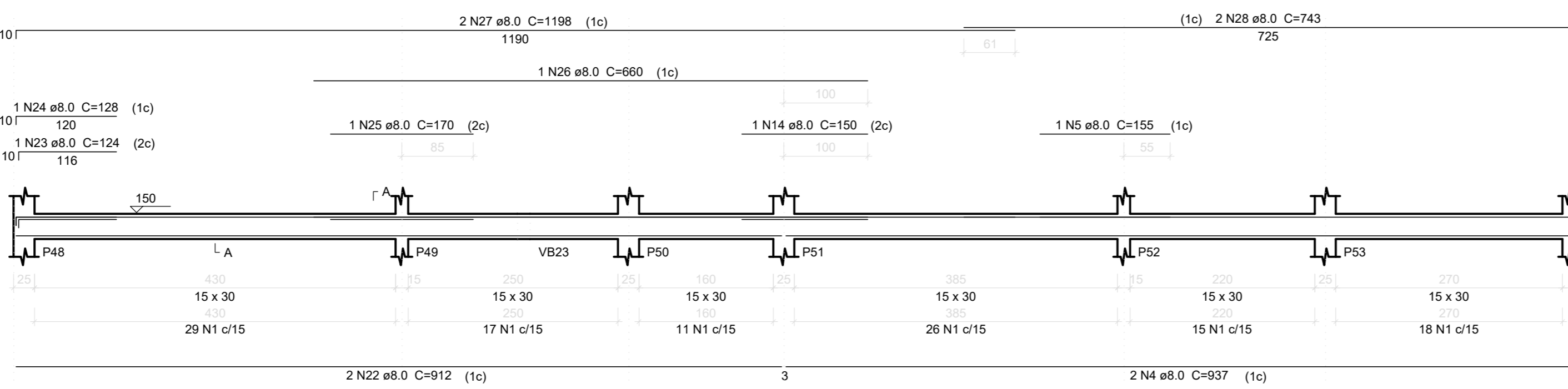
VB10  
ESC 1:50



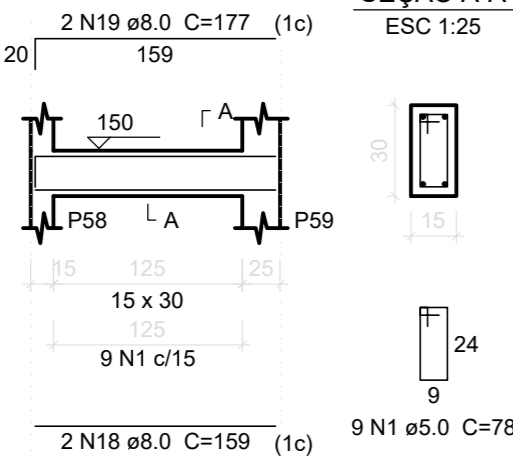
VB13  
ESC 1:50



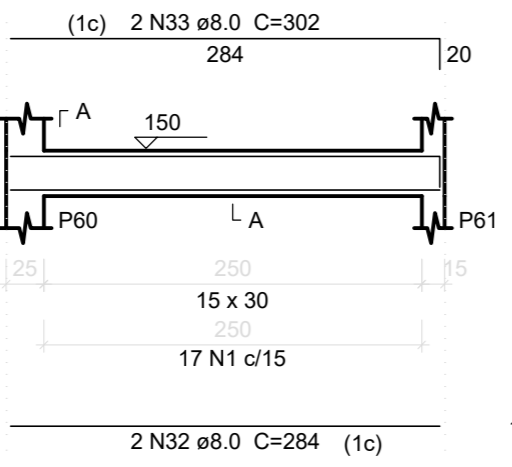
VB14  
ESC 1:50



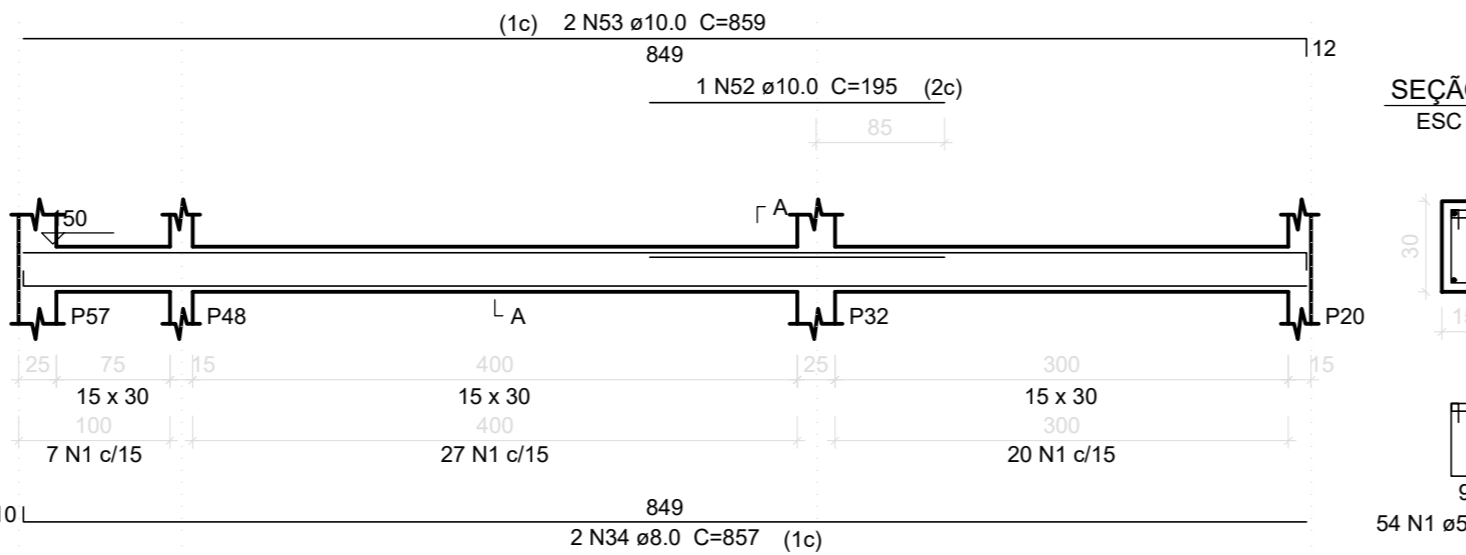
VB17  
ESC 1:50



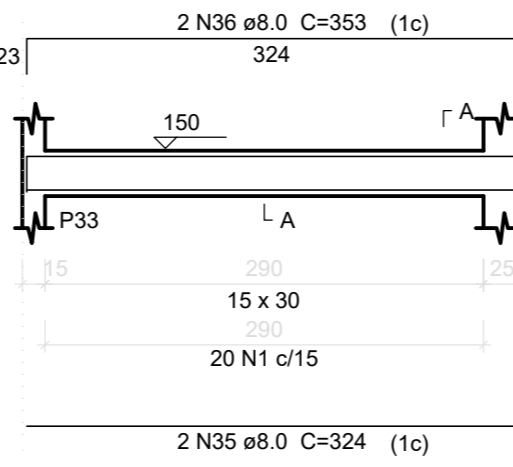
VB18  
ESC 1:50



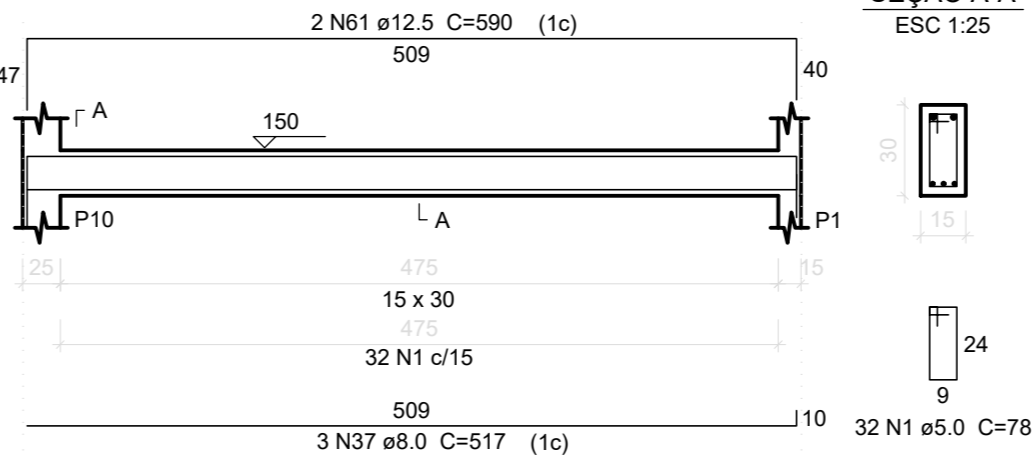
VB19  
ESC 1:50



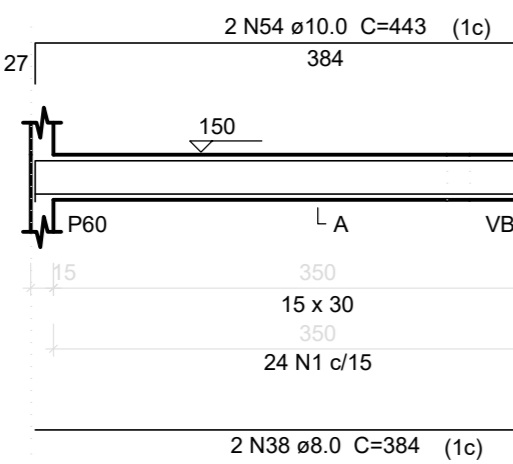
VB20  
ESC 1:50



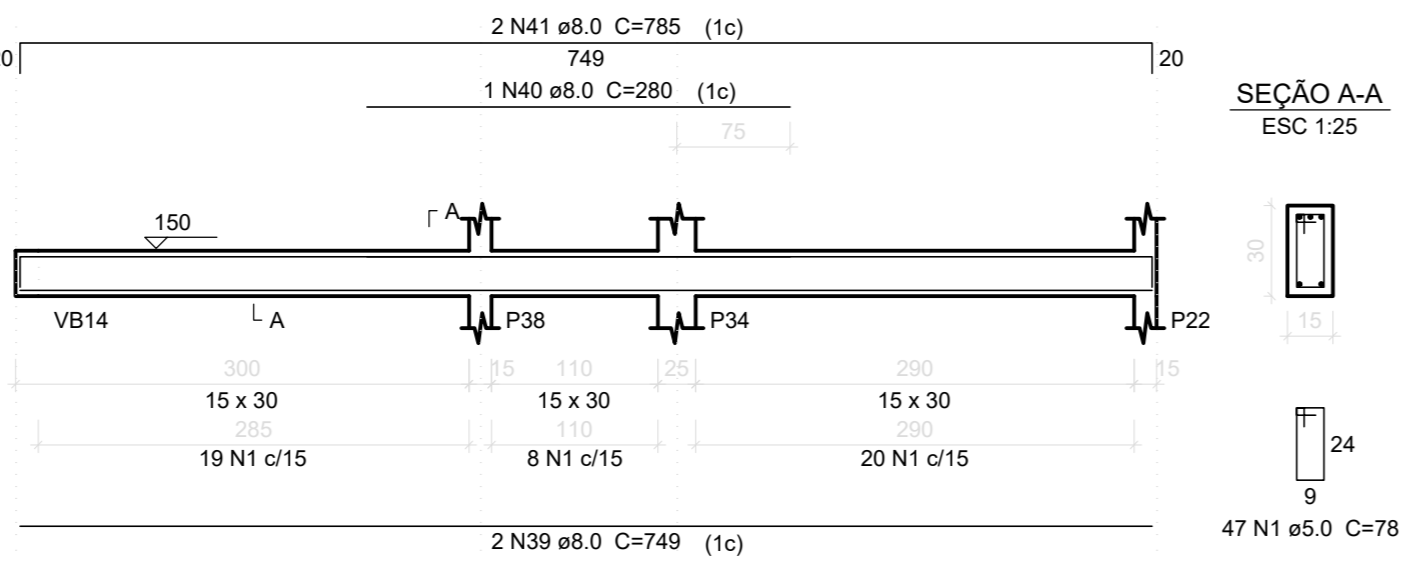
VB21  
ESC 1:50



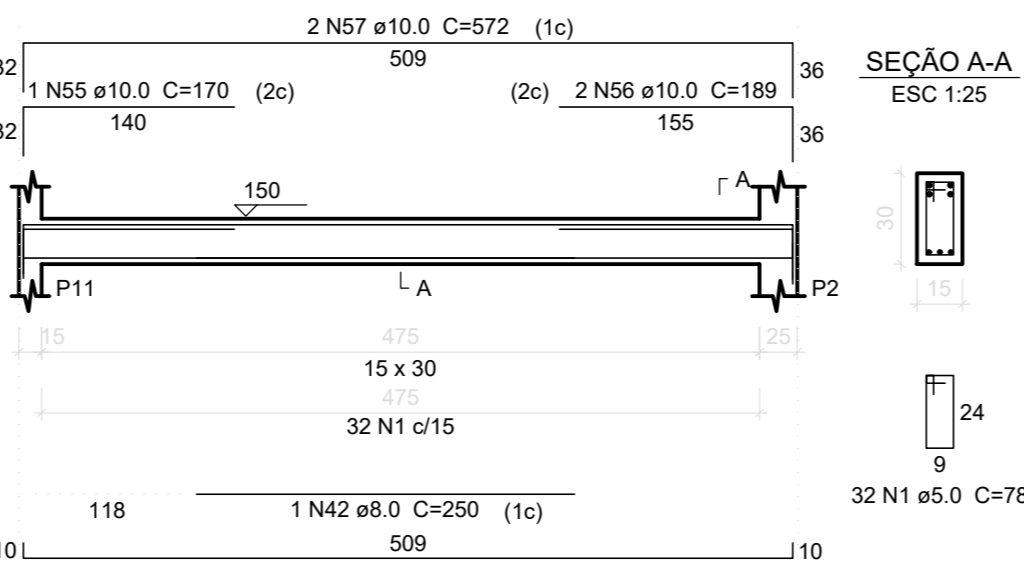
VB22  
ESC 1:50



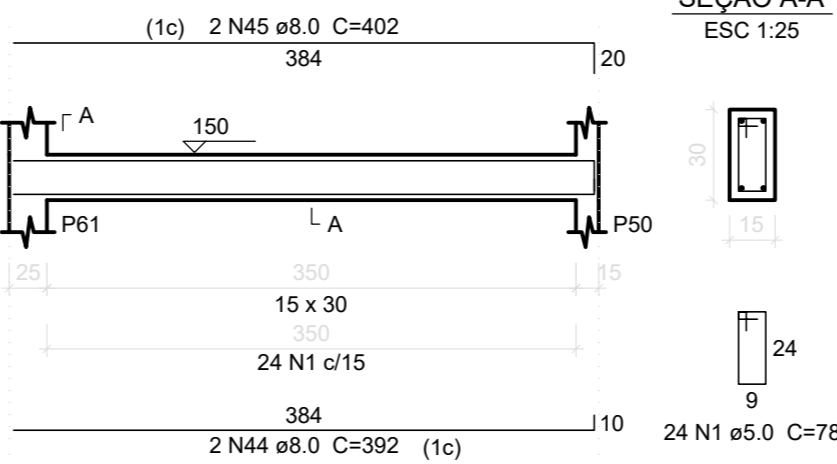
VB23  
ESC 1:50



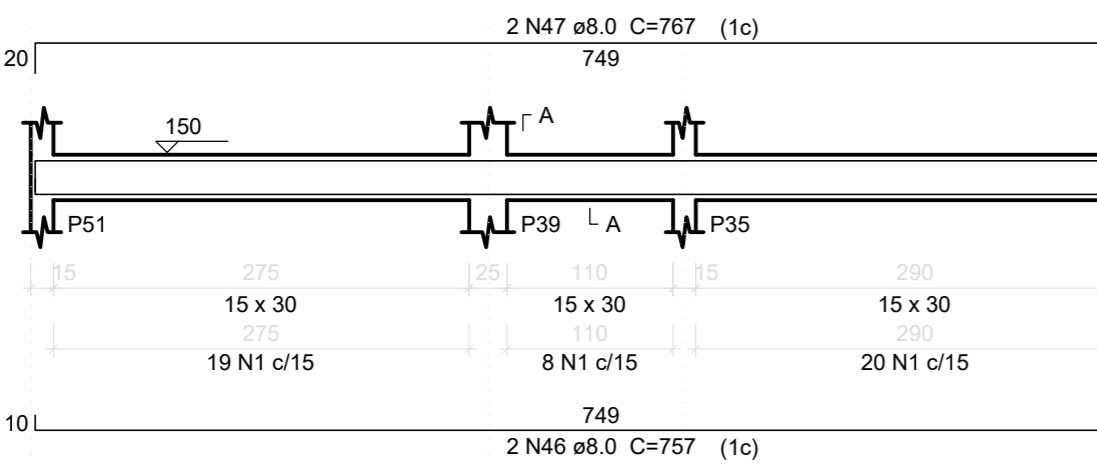
VB24  
ESC 1:50



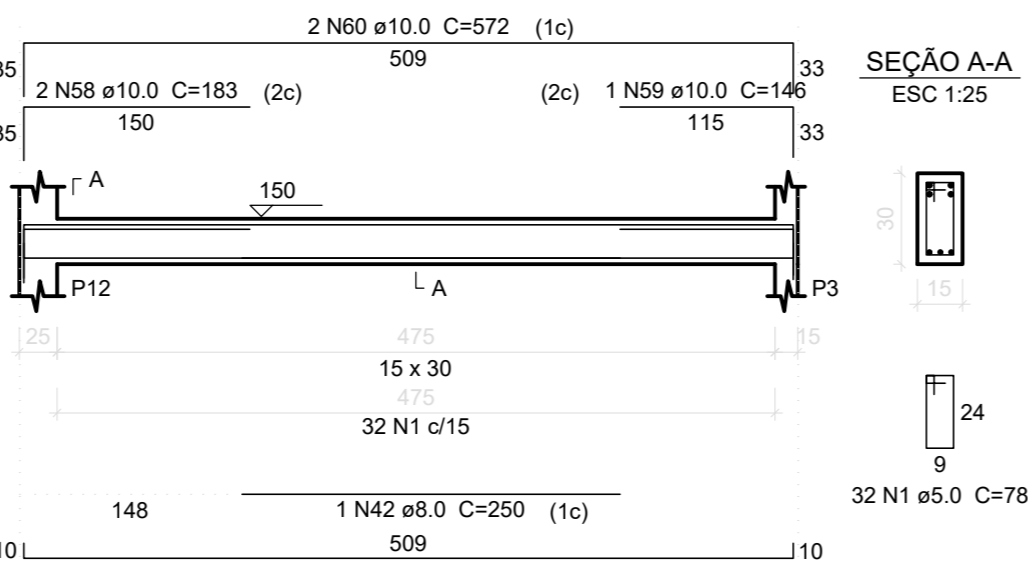
VB25  
ESC 1:50



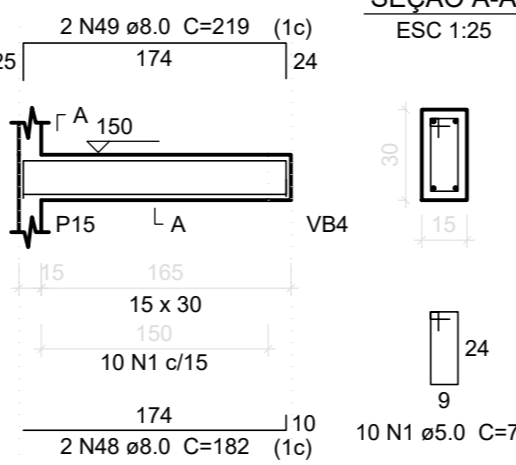
VB26  
ESC 1:50



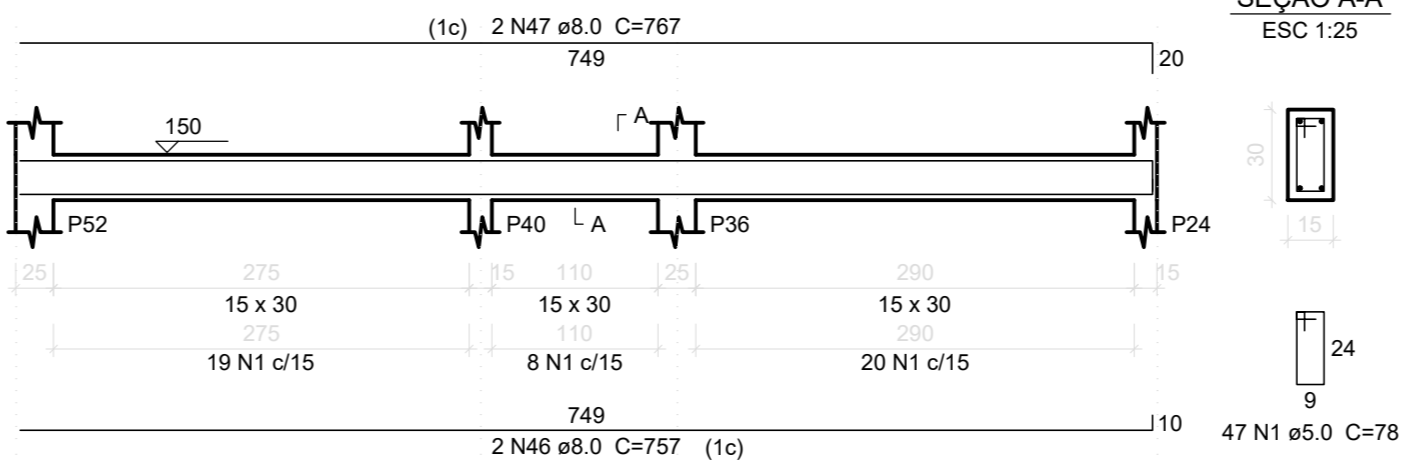
VB27  
ESC 1:50



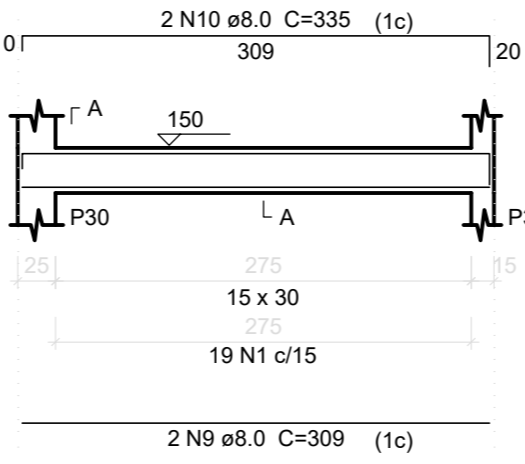
VB28  
ESC 1:50



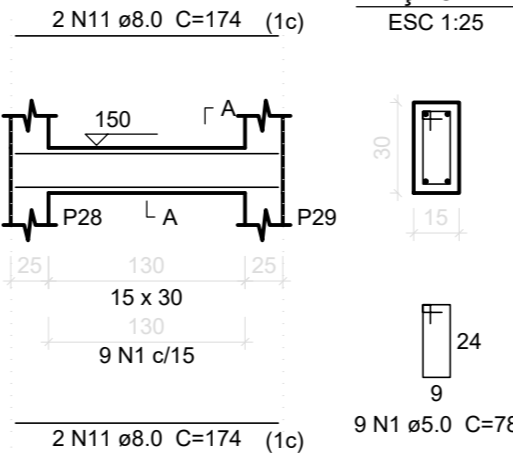
VB29  
ESC 1:50



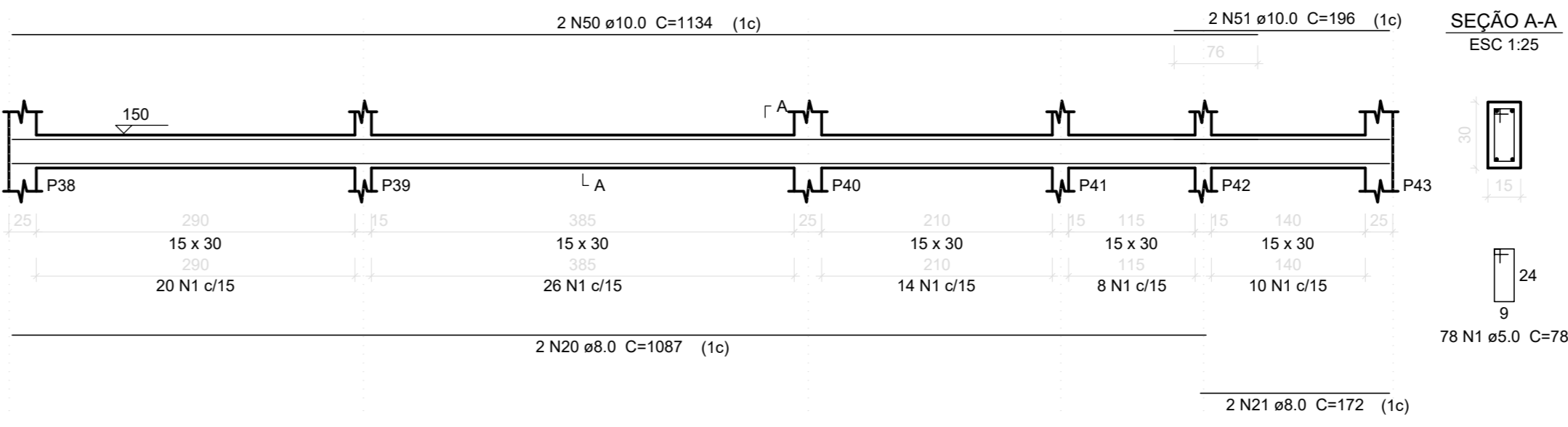
VB8  
ESC 1:50



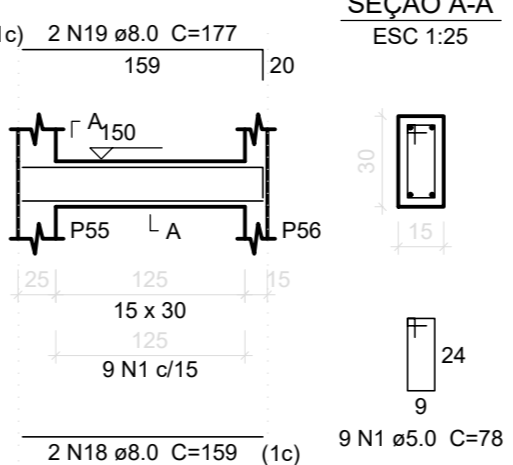
VB9  
ESC 1:50



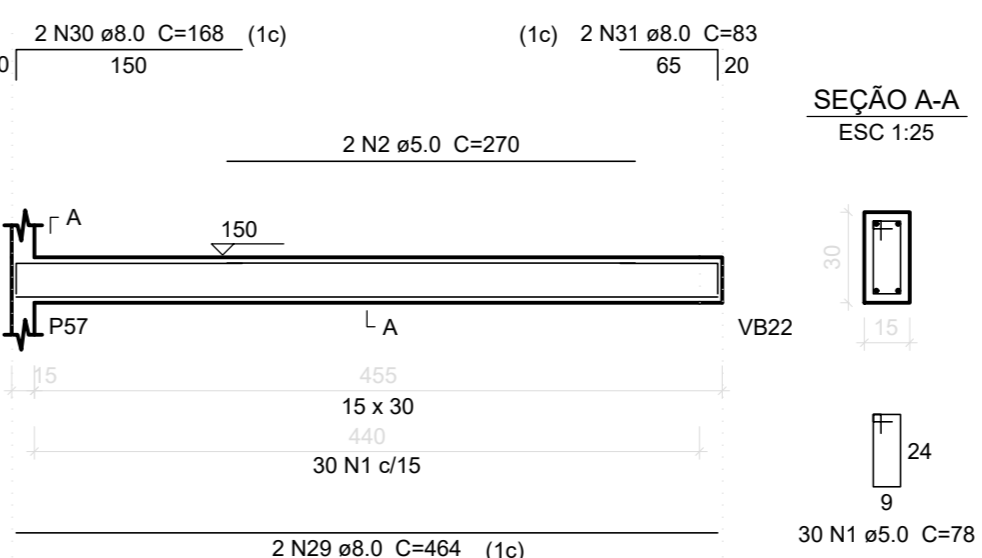
VB12  
ESC 1:50



VB15  
ESC 1:50



VB16  
ESC 1:50



Relação do aço

ACO	N	DIAM (mm)	QUANT (Barras)	UNIT (cm)	C TOTAL (cm)
CA60	1	5.0	885	78	69030
CA50	2	5.0	2	270	540
	3	8.0	2	922	1844
	4	8.0	4	937	3748
	5	8.0	4	155	620
	6	8.0	1	875	875
	7	8.0	2	1200	2400
	8	8.0	2	713	1426
	9	8.0	2	309	618
	10	8.0	2	335	670
	11	8.0	4	174	696
	12	8.0	2	500	1000
	13	8.0	2	607	1214
	14	8.0	3	150	450
	15	8.0	2	490	980
	16	8.0	2	1198	2396
	17	8.0	2	401	802
	18	8.0	8	159	1272
	19	8.0	8	177	1416
	20	8.0	2	1087	2174
	21	8.0	2	172	344
	22	8.0	2	912	1824
	23	8.0	1	124	124
	24	8.0	1	128	128
	25	8.0	1	170	170
	26	8.0	1	660	660
	27	8.0	2	1198	2396
	28	8.0	2	743	1486
	29	8.0	2	404	808
	30	8.0	2	168	336
	31	8.0	2	83	166
	32	8.0	2	284	568
	33	8.0	2	302	604
	34	8.0	2	657	1314
	35	8.0	2	324	648
	36	8.0	2	353	706
	37	8.0	3	617	1851
	38	8.0	2	384	768
	39	8.0	2	749	1498
	40	8.0	1	280	280
	41	8.0	2	785	1570
	42	8.0	2	250	500
	43	8.0	4	525	2100
	44	8.0	2	392	784
	45	8.0	2	402	804
	46	8.0	4	757	3028
	47	8.0	4	767	3068
	48	8.0	2	182	364
	49	8.0	2	219	438
	50	10.0	2	1134	2268
	51	10.0	2	196	392
	52	10.0	1	195	195
	53	10.0	2	859	1718
	54	10.0	2	443	886
	55	10.0	1	170	170
	56	10.0	2	189	378
	57	10.0	2	572	1144
	58	10.0	2	183	366
	59	10.0	1	146	146
	60	10.0	2	572	1144
	61	12.5	2	590	1180

Resumo do aço

ACO	DIAM (mm)	C TOTAL (m)	PESO + 10 % (kg)
CA60	8.0	550	238.7
	10.0	88.1	59.7
	12.5	11.8	12.5
CA60	5.0	695.7	118

CA50	310.9
CA60	118

Volume de concreto (C-25) = 6.47 m³  
Área de forma = 107.85 m²

	<b>OBRA</b> CANAL E PRONTO ATENDIMENTO VETERINÁRIO MUNICIPAL	<b>FOLHA</b> 05/11
<b>GESTOR</b> =	<b>ORÇOV</b> =	
<b>PROGRAMA</b> =	<b>Nº OPERAÇÃO</b> =	<b>Nº SICOV</b> =
<b>ENDEREÇO</b> ESTRADA MUNICIPAL DARUICHE ELIAS LASMAR		
<b>PROPRIETÁRIO</b> PREFEITURA MUNICIPAL DE CAMPO BELO		<b>CNPJ</b> 18.659.334/0001-37
<b>AUTOR DO PROJETO</b> KESLEY ANTONIO DE ALMEIDA DORNELAS		<b>CREA - MG</b> 321241/D-MG
<b>DESENHO</b> KESLEY ANTONIO DE ALMEIDA DORNELAS		
<b>CONTEÚDO</b> ESTRUTURAL - VIGAS	<b>REVISÃO</b> 0	<b>ESCALA</b> INDICADA
<b>UNIDADE</b> METROS	<b>DATA</b> AGO / 2025	